



CLARIFICATION: SINK AND FAUCET SPECIFICATIONS
(KEYNOTE ② SHEET P3.0)

COUNTERTOP WITH INTEGRAL SINK FURNISHED UNDER THE SOLID COUNTERTOP SPECIFICATION SECTION. JUST J35FS FLAT GRID STRAINER. CHICAGO "HYDRONIC" "ECAST" #116.303.AB.1 SINGLE HOLE (OR T&S BRASS OR ZURN EQUAL). DUAL BEAM SENSOR OPERATED, 120V/1Ø ELECTRIC POWERED FAUCET WITH 12 VOLT A.C. TRANSFORMER. 5-1/4" RIGID/SWING GOOSENECK SPOUT WITH 1.5 GPM LAMINAR FLOW NON-AERATING OUTLET. LEONARD #170A-LF, POINT OF USE THERMOSTATIC MIXING VALVE.

CONNECTION SIZES			
SOIL OR WASTE	VENT	DOMESTIC COLD WATER	DOMESTIC HOT WATER
2"	1 1/2"	1/2"	1/2"



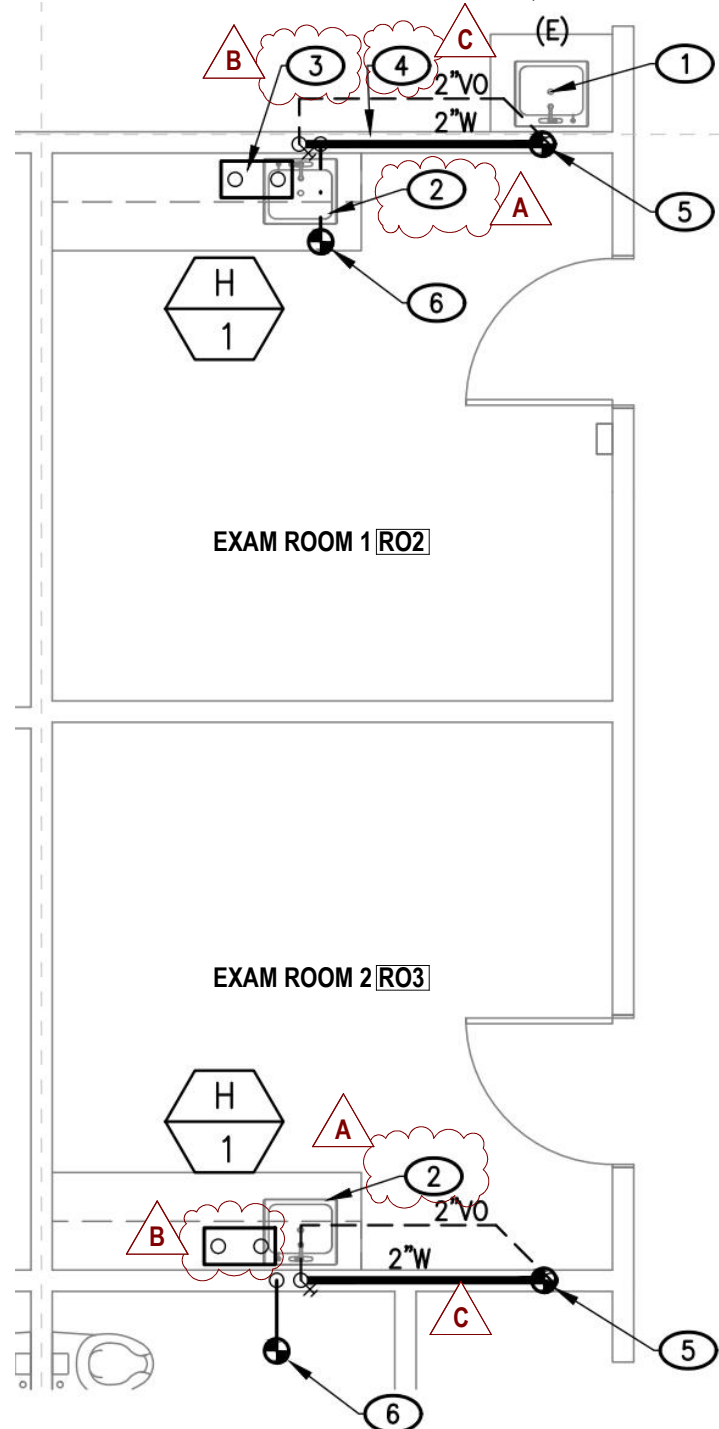
CHANGE: WATER HEATERS REMOVED
(KEYNOTE ③ SHEET P3.0)

The electric water heater originally shown serving Exam Rooms 2 and 3 shall be removed from the project scope. All associated electrical and plumbing connections shown in the construction documents related solely to this water heater are to be omitted. Any necessary re-routing of affected services shall be coordinated in the field and submitted for review if required.



CLARIFICATION: KEY NOTE CORRECTION
(KEYNOTE ④ SHEET P3.0)

Keynote 4 should read:
"Expose all utilities *in wall* behind existing sink"
This applies to both the North and South Exam Rooms.



1 - PARTIAL PLUMBING PLAN
ROOM 2 & 3 - EXAM ROOMS

SCALE: 1/4" = 1'-0"

ADDENDUM 3 - EXAM ROOMS 1 (R02) AND 2 (R03) CLARIFICATIONS AND CHANGE

PROJECT ADDRESS:

Westside Health Care District
100 E. North Street
Taft, CA. 93268

PROJECT CONTACT:

Ryan Shultz, MSHCA
Executive Director
(661) 765-7234 Office
(661) 203-5757 Cell
rshultz@wshcd.org