



SITE LEGEND	
TYPE	DESCRIPTION
	NEW TURF
	NEW ARTIFICIAL TURF
	NEW CONCRETE - 4" REINFORCED CONCRETE FLATWORK, #3 REBAR @ 24" O.C. BOTH WAYS LAP TO BE 24X DIA.
	NEW AC PAVING
	DECOMPOSED GRANITE
	NEW BUILDING
	PROPERTY LINE
	CHAINLINK FENCE
	WROUGHT IRON FENCE
	F.H. FIRE HYDRANT

**ordiz melby architects**  
 a professional corporation  
 5500 Ming Avenue, Suite 280  
 Bakersfield, CA 93309  
 www.ordizmelby.com  
 (661) 832-4258  
 (661) 832-4251



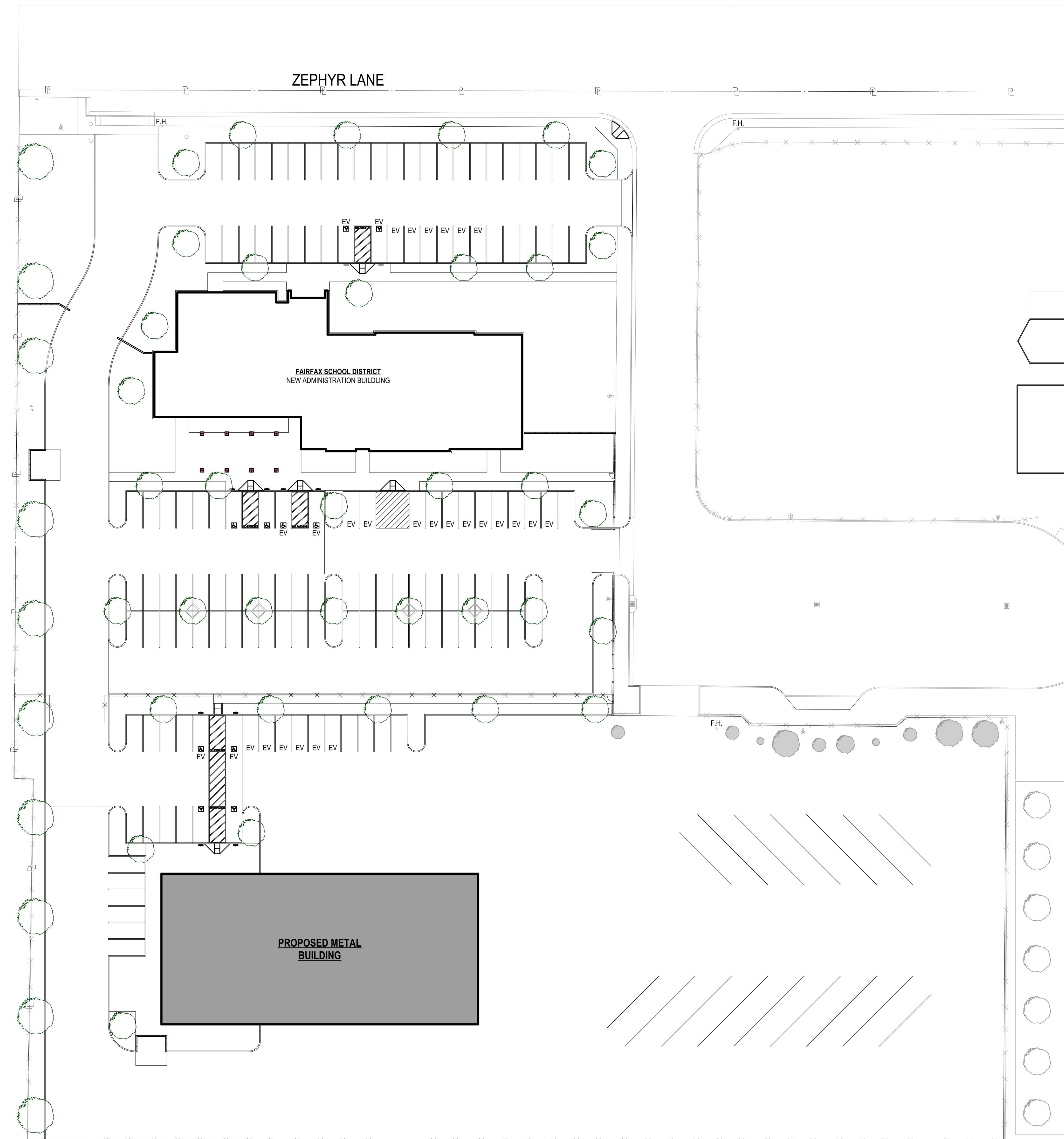
DANNY E. ORDIZ, AIA ARCHITECT C-14728  
 MANUEL MALDONADO JR., AIA ARCHITECT C-30294  
 ROBERT TROST, AIA ARCHITECT C-14762  
 JEANNE S. BERTOLACCINI, AIA ARCHITECT C-35996  
 JAMES R. VARNER, AIA ARCHITECT C-19983  
 JOSEPH E. ZASORSKI, AIA ARCHITECT C-36742

**MOT BUILDING**

**FOR:**

**FAIRFAX SCHOOL DISTRICT**

6327 ZEPHYR LANE,  
 BAKERSFIELD, CA 93307



MARK	DATE	DESCRIPTION

JOB NUMBER:  
**2314.00**  
 AE: 03-#####  
 PTN: ##-##-##  
 CAD DRAWING FILE:  
 2314 Fairfax DO - DD27  
 DRAWN BY:  
 CH  
 CHECKED BY:  
 AG

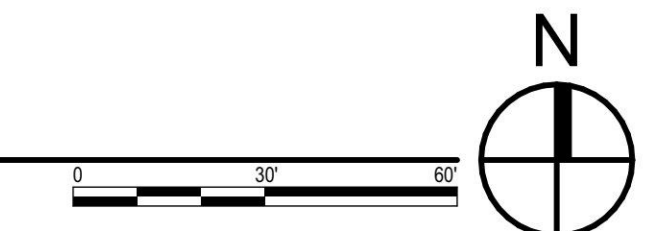
CHECK AND VERIFY ALL DIMENSIONS BEFORE PROCEEDING WITH THE WORK. REPORT DISCREPANCIES TO THE ARCHITECT. THE DRAWINGS, IDEAS, AND DESIGNS REPRESENTED ON THIS SHEET ARE THE PROPERTY OF THE ARCHITECT.  
 COPYRIGHT 2024  
 ORDIZ MELBY ARCHITECTS  
 A PROFESSIONAL CORPORATION

SHEET TITLE  
**SITE PLAN**

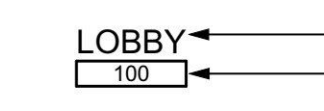
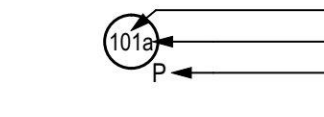

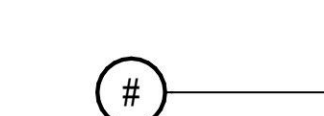
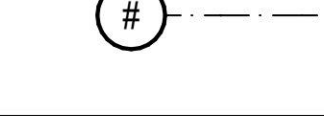

SHEET IDENTIFICATION NUMBER

**A-112**

**A3 SITE PLAN**  
 SCALE: 1" = 30'



**SYMBOL LEGEND**

- 
 ROOM NAME  
ROOM NUMBER
- 
 DOOR SYMBOL  
ROOM NUMBER  
DOOR NUMBER  
PANIC HARDWARE INDICATOR
- 
 WINDOW SYMBOL  
SEE WINDOW SCHEDULE ON A-601
- 
 EXTERIOR ELEVATION SYMBOL  
LOCATION ON SHEET  
SHEET NUMBER
- 
 GRID LINE - FACE OF
- 
 GRID LINE - CENTER

**ordiz melby architects**  
 a professional corporation  
 5500 Ming Avenue, Suite 280 Bakersfield, CA 93309  
 o: (661) 833-5258 f: (661) 832-4291  
 www.ordizmelby.com



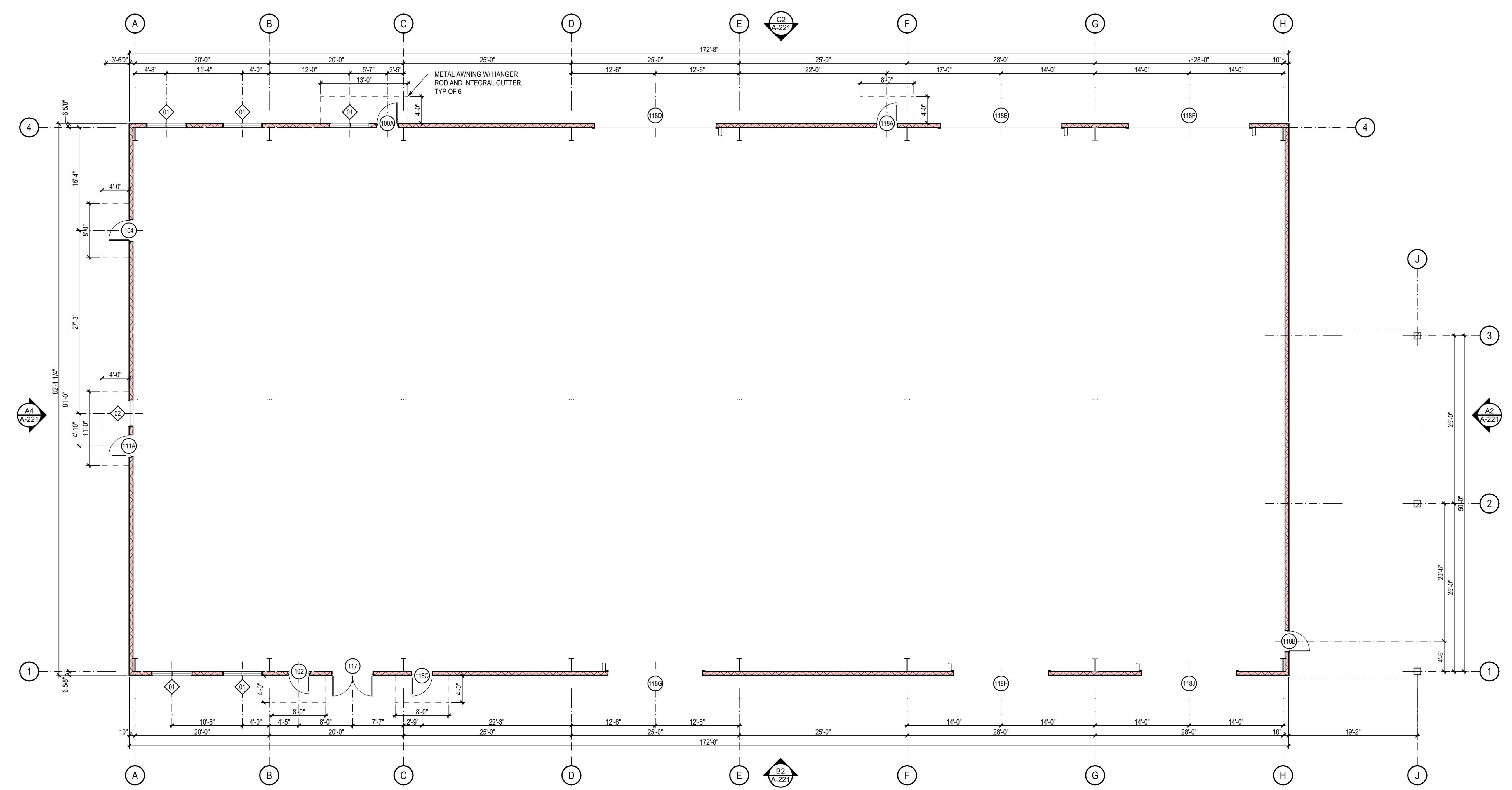
DANNY E. CRUZ, AIA ARCHITECT C-14728  
 MANUEL MALDONADO JR., AIA ARCHITECT C-36294  
 ROBERT TROST, AIA ARCHITECT C-14762  
 JEANNE S. BERTOLACCHI, AIA ARCHITECT C-35956  
 JAMES R. VARNER, AIA ARCHITECT C-19963  
 JOSEPH E. ZASORSKI, AIA ARCHITECT C-36742

**MOT BUILDING**

**FOR:**

**FAIRFAX SCHOOL DISTRICT**

6327 ZEPHYR LANE,  
 BAKERSFIELD, CA 93307



**A2 FLOOR PLAN**  
 SCALE: 1/8" = 1'-0"

MARK	DATE	DESCRIPTION

JOB NUMBER:  
**2314.00**  
 AE: 03-####  
 PTN: ##-##  
 CAD DRAWING FILE:  
 2314 Fairfax DO - DD27  
 DRAWN BY:  
 CH  
 CHECKED BY:  
 AG  
 CHECK AND VERIFY ALL DIMENSIONS BEFORE PROCEEDING WITH THE WORK. REPORT DISCREPANCIES TO THE ARCHITECT.  
 THE DRAWINGS, IDEAS AND DESIGNS REPRESENTED ON THIS SHEET ARE THE PROPERTY OF THE ARCHITECT.  
 COPYRIGHT 2024  
 ORDIZ MELBY ARCHITECTS  
 A PROFESSIONAL CORPORATION

**SHEET TITLE**  
**FLOOR PLAN**

SHEET IDENTIFICATION NUMBER

**A-121**

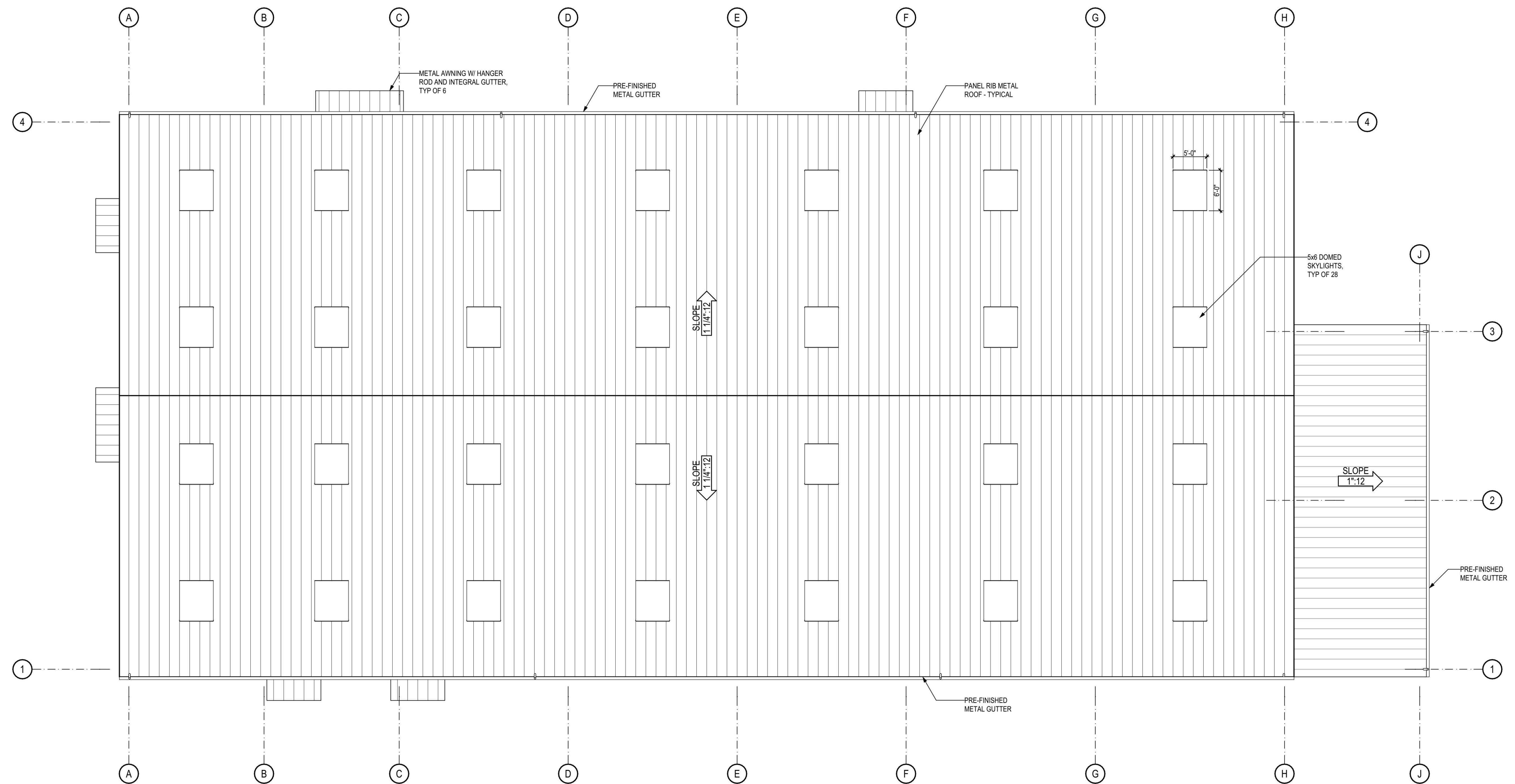


**MOT BUILDING**

**FOR:**

**FAIRFAX SCHOOL DISTRICT**

6327 ZEPHYR LANE,  
 BAKERSFIELD, CA 93307



**A2 ROOF PLAN**  
 SCALE: 1/8" = 1'-0"

MARK	DATE	DESCRIPTION

JOB NUMBER:  
**2314.00**  
 AE: 03-####  
 PTN: ##-##  
 CAD DRAWING FILE:  
 2314 Fairfax DO - DD27  
 DRAWN BY:  
 CH  
 CHECKED BY:  
 AG  
 CHECK AND VERIFY ALL DIMENSIONS BEFORE PROCEEDING WITH THE WORK. REPORT DISCREPANCIES TO THE ARCHITECT.  
 THE DRAWINGS, IDEAS, AND DESIGNS REPRESENTED ON THIS SHEET ARE THE PROPERTY OF THE ARCHITECT.  
 COPYRIGHT 2024  
 ORDIZ MELBY ARCHITECTS  
 A PROFESSIONAL CORPORATION

**SHEET TITLE**  
**ROOF PLAN**

**SHEET IDENTIFICATION NUMBER**  
**A-141**

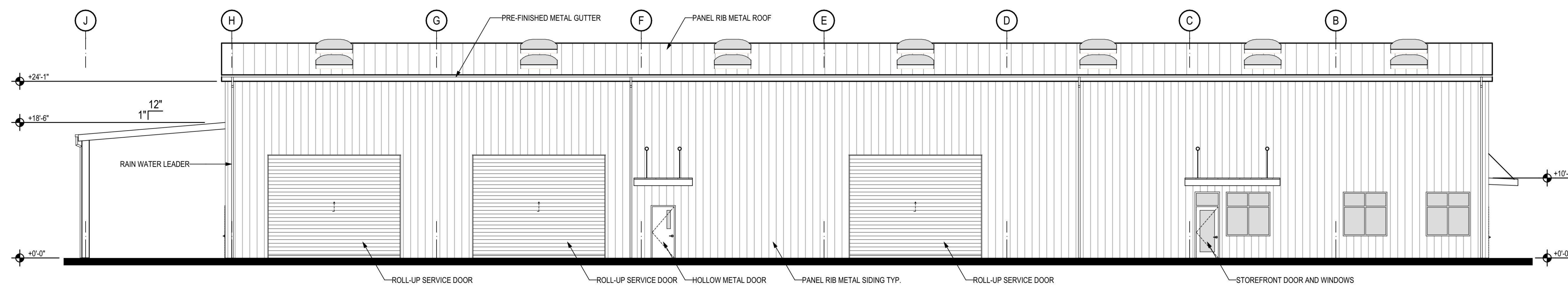


**MOT BUILDING**

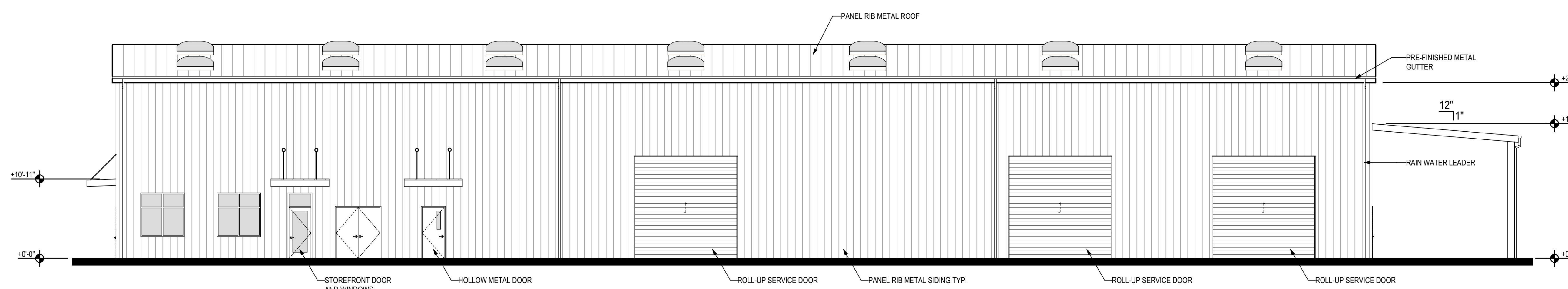
FOR:

FAIRFAX SCHOOL DISTRICT

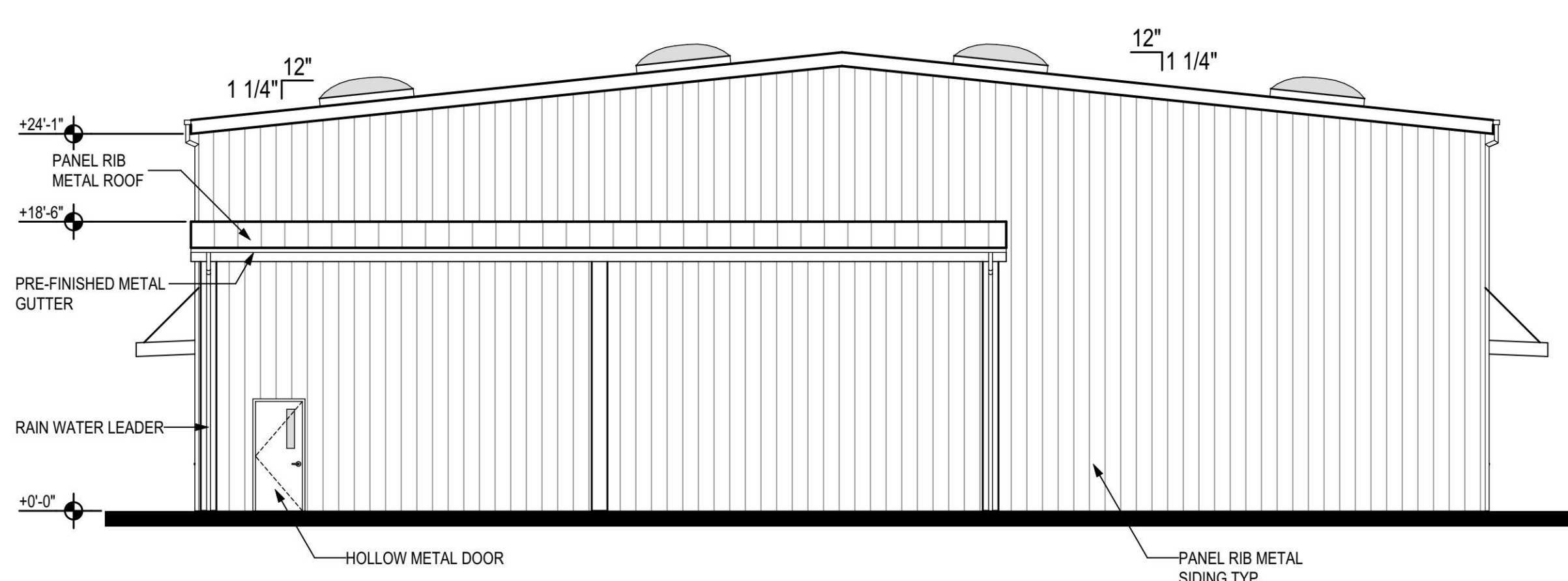
6327 ZEPHYR LANE,  
 BAKERSFIELD, CA 93307



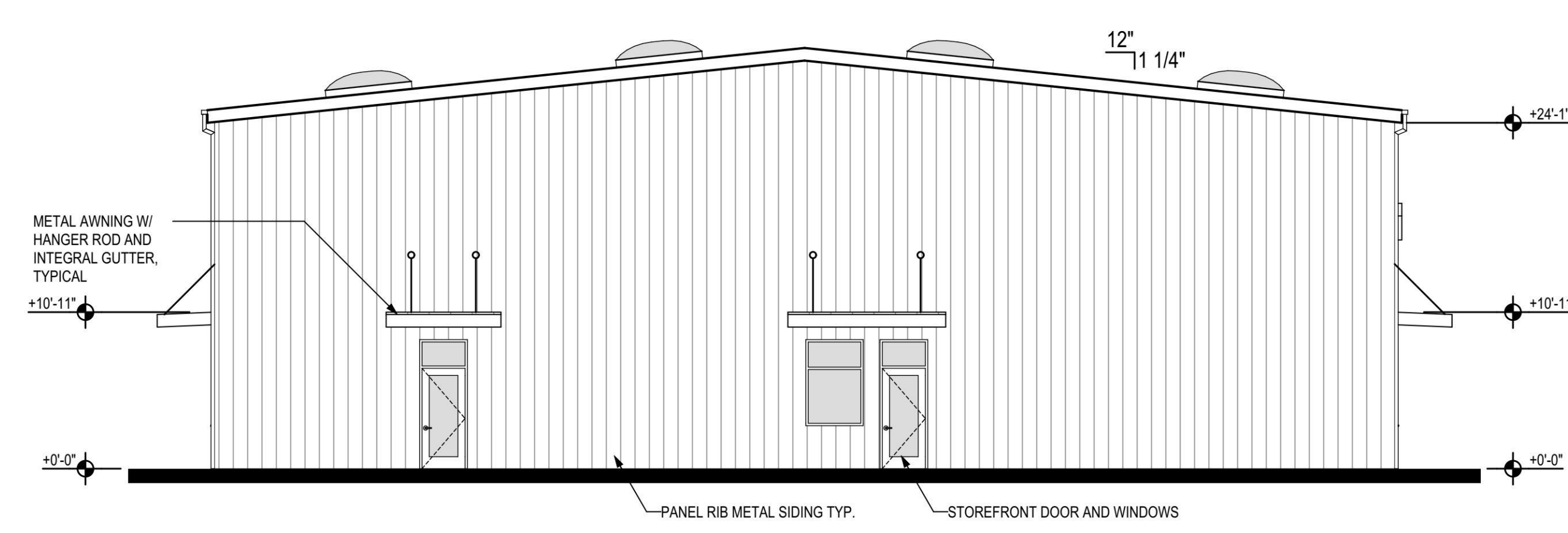
**C2 NORTH ELEVATION**  
 SCALE: 1/8" = 1'-0"



**B2 SOUTH ELEVATION**  
 SCALE: 1/8" = 1'-0"



**A2 EAST ELEVATION**  
 SCALE: 1/8" = 1'-0"



**A4 WEST ELEVATION**  
 SCALE: 1/8" = 1'-0"

MARK	DATE	DESCRIPTION

JOB NUMBER:  
**2314.00**  
 AE: 03-#####  
 PTN: ###-##  
 CAD DRAWING FILE:  
 2314 Fairfax DO - DD27  
 DRAWN BY:  
 CH  
 CHECKED BY:  
 AG  
 CHECK AND VERIFY ALL DIMENSIONS BEFORE PROCEEDING WITH THE WORK. REPORT DISCREPANCIES TO THE ARCHITECT. THE DRAWINGS, IDEAS, AND DESIGNS REPRESENTED ON THIS SHEET ARE THE PROPERTY OF THE ARCHITECT.  
 COPYRIGHT 2024  
 ORDIZMELBY ARCHITECTS  
 A PROFESSIONAL CORPORATION

SHEET TITLE  
**EXTERIOR ELEVATIONS**

SHEET IDENTIFICATION NUMBER

**A-221**

DOOR AND FRAME SCHEDULE															
DOOR	TYPE	DOOR							LOUVER (WxH)	FRAME		HARDWARE		DOOR	REMARKS
		SIZE			MATERIAL	FINISH	VISION LIGHT	MATERIAL		FINISH	SET NUMBER	PANIC			
		W	HT	THK											
100A	B	3'-0"	7'-0"	1.34"	ALUM/GLASS	FF	-	-	ALUM	FF	-	-	100A	-	
102	B	3'-0"	7'-0"	1.34"	ALUM/GLASS	FF	-	-	ALUM	FF	-	-	102	CARD READER	
104	B	3'-0"	7'-0"	1.34"	ALUM/GLASS	FF	-	-	ALUM	FF	-	-	104	CARD READER	
111A	B	3'-0"	7'-0"	1.34"	ALUM/GLASS	FF	-	-	ALUM	FF	-	-	111A	CARD READER	
117	E	6'-0"	7'-0"	1.34"	HM	P	-	-	HM	P	-	-	117	-	
118A	A	3'-0"	7'-0"	1.34"	HM	P	6X30	-	HM	P	-	-	118A	CARD READER	
118B	A	3'-0"	7'-0"	1.34"	HM	P	6X30	-	HM	P	-	-	118B	CARD READER	
118C	A	3'-0"	7'-0"	1.34"	HM	P	6X30	-	HM	P	-	-	118C	CARD READER	
118D	C	18'-0"	14'-0"	-	STL	FF	-	-	STL	FF	-	-	118D	MOTORIZED OPERATOR	
118E	C	18'-0"	14'-0"	-	STL	FF	-	-	STL	FF	-	-	118E	MOTORIZED OPERATOR	
118F	C	18'-0"	14'-0"	-	STL	FF	-	-	STL	FF	-	-	118F	MOTORIZED OPERATOR	
118G	D	14'-0"	14'-0"	-	STL	FF	-	-	STL	FF	-	-	118G	MOTORIZED OPERATOR	
118H	D	14'-0"	14'-0"	-	STL	FF	-	-	STL	FF	-	-	118H	MOTORIZED OPERATOR	
118J	D	14'-0"	14'-0"	-	STL	FF	-	-	STL	FF	-	-	118J	MOTORIZED OPERATOR	

DOOR AND FRAME TYPE SCHEDULE					
TYPE	A	B	C	D	E
ELEVATION					
GLASS TYPE	EXTERIOR DOOR: A INTERIOR DOOR: B	A	-	-	-

GLAZING / FRAME LEGEND		WINDOW TYPE SCHEDULE	
MARK	DESCRIPTION	ID	
HM	HOLLOW METAL		
ALUM	ALUMINUM STOREFRONT		
STL	STEEL		
TG	TEMPERED GLASS LOCATION		
FF	FACTORY FINISH		
P	PAINT		
GLAZING TYPES			
GLASS TYPE 'A' PANE THICKNESS: 1/4" EXTERIOR PANE: SOLARBAN 90 ON CLEAR (2) AIR SPACE: 1/2" INTERIOR: CLEAR			
DOOR & WINDOW NOTES			
SAFETY GLAZING 1. INDIVIDUAL GLAZED AREAS, INCLUDING GLASS MIRRORS, IN HAZARDOUS AREAS PER SECTION 2406.1 SHALL COMPLY WITH THE PROVISIONS OF SECTION 2406. 2. IMPACT TESTS: GLAZING SHALL COMPLY WITH TEST CRITERIA PER TABLE 2406.2(1) OR 2406.2(2) WHERE APPLICABLE. 3. GLAZING IN ATHLETIC FACILITIES OR SIMILAR USE SUBJECT TO IMPACT LOAD SHALL COMPLY WITH SECTION 2406.			
DOORS 1. ALL WOOD DOORS SHALL BE FACTORY STAINED & FINISHED 2. ALL GLAZING IN EXTERIOR DOORS SHALL MATCH THAT OF EXTERIOR WINDOW GLAZING PER SPECIFICATION 08800 3. ALL GLAZING IN DOORS SHALL BE TEMPERED			
		MATERIAL	
		ALUMINUM STOREFRONT	ALUMINUM STOREFRONT
		FINISH	
		ANODIZED	ANODIZED
		COLOR	
		DARK BRONZE	DARK BRONZE
		GLASS TYPE	
		A	A

**ordiz melby architects**  
a professional corporation  
5500 Ming Avenue, Suite 280  
Bakersfield, CA 93309  
www.ordizmelby.com  
c. (661) 833-5258  
f. (661) 832-4291

MANUEL MALDONADO JR., AIA  
C-36294  
DECEMBER 31, 2022  
STATE OF CALIFORNIA

DANNY E. CRUZ, AIA  
ARCHITECT C-14728  
MANUEL MALDONADO JR., AIA  
ARCHITECT C-36294  
ROBERT TROST, AIA  
ARCHITECT C-14762

JEANNE S. BERTOLACONI, AIA  
ARCHITECT C-35956  
JAMES R. VARNER, AIA  
ARCHITECT C-19983  
JOSEPH E. ZASOSKI, AIA  
ARCHITECT C-36742

**MOT BUILDING**

**FOR:**

**FAIRFAX SCHOOL DISTRICT**

6327 ZEPHYR LANE,  
BAKERSFIELD, CA 93307

MARK	DATE	DESCRIPTION

JOB NUMBER:  
**2314.00**  
AR: 03-#####  
PTN: ###-###  
CAD DRAWING FILE:  
2314 Fairfax DO - DD27  
DRAWN BY:  
CH  
CHECKED BY:  
AG  
CHECK AND VERIFY ALL DIMENSIONS BEFORE PROCEEDING WITH THE WORK. REPORT DISCREPANCIES TO THE ARCHITECT.  
THE DRAWINGS, IDEAS, AND DESIGNS REPRESENTED ON THIS SHEET ARE THE PROPERTY OF THE ARCHITECT.  
COPYRIGHT 2024  
ORDIZ MELBY ARCHITECTS  
A PROFESSIONAL CORPORATION

SHEET TITLE  
**DOOR AND WINDOW SCHEDULES**

SHEET IDENTIFICATION NUMBER

**A-601**